



Message from the Mayor

Exhibition Program

When we started the **Woollahra Small Sculpture Prize** 12 years ago, we wanted to create an event that would become recognised internationally and appreciated locally.

With many opportunities to showcase larger sculptures existing both here and overseas, our objective was to build a unique competition for smaller works of up to 80cm.

I am pleased to say that each year the Prize continues to grow and improve. It receives hundreds of entries from all over the world and thousands of residents and visitors enjoy the free public exhibition and artist talks.

The **Woollahra Small Sculpture Prize** provides Woollahra Council with the opportunity to demonstrate our commitment to cultural development in a municipality that is passionate about the arts.

This year 42 works have been shortlisted thanks to our judges, Guido Belgiorno-Nettis AM, Natalie Wilson and Professor Janice Reid AM, I commend the shortlisted works to you and congratulate all the sculptors. I hope you enjoy the 2012 exhibition as much as I do.

If you have a favourite, please remember to cast your vote for the Viewers' Choice Award online at <http://sculptureprize.woollahra.nsw.gov.au>, or in person at the exhibition. The Award will be announced soon after the conclusion of the exhibition on 11 November. If you fall in love with one of the artworks, they are for sale and would make a great addition to your office, home, garden or personal collection.

For those of you who are curious about the work you have seen on display, I would encourage you to attend the Artist Talks series on Saturday 27 October. This event will allow you to interact with the artists and discover more about their creative process.

We could not host this exhibition without help from our sponsors, supporters, dedicated committee members, staff and volunteers. We are very grateful for their shared enthusiasm and commitment.

Thank you for being part of the 2012 Woollahra Small Sculpture Prize.

Clr Andrew Petrie
Mayor of Woollahra

Exhibition of Finalists: 27 October to 11 November.
9am-5pm weekdays and 10am-4pm weekends. *Free Entry.*

Artist Floor Talks: Saturday 27 October. A selection of 2012 finalists will be conducting free talks with Art Consultant Natalia Bradshaw at the exhibition between 2 and 4pm. *Free Entry.*
Bookings essential on 9391 7135.

Environmental Schools Sculpture Prize Launch & Exhibition: Monday 29 October at 4pm. Woollahra Council's Customer Services Centre. Winners announced along with launch activities, including Woollahra Small Sculpture Prize finalist Thor Beowulf. The Environmental Schools Sculpture Prize Exhibition will continue 8am to 4.30pm weekdays. *Free Entry.*

Sculpture Time for Little Artists: Tuesday 30 October, Monday 5 November and Tuesday 6 November 10.30-11.30am, ages 3 to 5. Session consists of a tour of the Woollahra Small Sculpture Prize and Environmental Schools Sculpture Prize followed by story reading, and a simple sculpture making activity. *Free Entry. For bookings contact 9391 7095.*

Kids Club: Wednesday 31 October (Watsons Bay Library) and Thursday 1 November (Double Bay Library). Each sculpture themed session offers guest presenters, games, cool crafts, pizza and light refreshments! Double Bay includes a tour of the Woollahra Small Sculpture Prize exhibition. 4 to 5pm, ages 6 to 10 years. *Free Entry. For bookings contact 9391 7100.*

Sculpture Tea Topic: Friday 9 November. A guided tour of the Prize with 2012 Woollahra Small Sculpture Prize Finalist Fairlie Kingston. 10am, includes high tea. *Free Entry. For bookings contact 9391 7100.*

FREE Guided Group Tours: Monday 27 October to Friday 9 November. *By appointment only on 9391 7135.*

2012 Woollahra Small Sculpture Prize Exhibition

Now in its twelfth year!

View the work of the 42 finalists selected by judges **Guido Belgiorno-Nettis AM**, Director of the Transfield Foundation and Trustee of the Art Gallery of NSW, **Natalie Wilson**, Assistant Curator of Australian Art at the Art Gallery of NSW and **Professor Janice Reid AM**, Vice-Chancellor of the University of Western Sydney (UWS).

Saturday 27 October – Sunday 11 November
Weekdays 9am to 5pm and weekends 10am to 4pm
FREE ENTRY

Woollahra Council Chambers,
536 New South Head Road, Double Bay.

The Woollahra Small Sculpture Prize

2012



Woollahra Council would like to thank the following
2012 sponsors and supporters:

Gold:
John Symond AM Sanchia Brahimi Isles Family PayPal™

Silver:
Ashdel Properties Pty Ltd

Media:
**NEWSLOCAL
Wentworth Courier**

Supporters:



The Woollahra Small Sculpture Prize is produced by Woollahra Municipal Council.

Woollahra Council Chambers,
536 New South Head Road,
Double Bay.

**Saturday 27 October –
Sunday 11 November**

[facebook.com/
WoollahraSmallSculpturePrize](https://www.facebook.com/WoollahraSmallSculpturePrize)

[twitter.com/
WoollahraSSP](https://twitter.com/WoollahraSSP)

Free Exhibition Guide

<http://sculptureprize.woollahra.nsw.gov.au>

The Woollahra Small Sculpture Prize 2012



1. ALY AITKEN (VIC)

... something borrowed
timber, sheep leather, shearling, modelling compound, ply, bandage, plastic bodyparts, digital image, found objects
78.5 x 48.5 x 31 cm
\$2,200



2. WONA BAE (VIC)

Pebbles
cork, wire, steel
80 x 80 x 30 cm
\$3,200



3. THOR BEOWULF (NSW)

Carbon-credit Approved, Organic, Sustainable, Regenerating, Solar Powered, Water Fuelled, Earth Enriched, Oxygen-Producing, Co2 Capture, Sequestration and Conversion Machine or The Carbon Credit Machine

bonsai, gauges, metal tubing, other instruments
67 x 46 x 52 cm
\$7,500

Courtesy of Beowulf Galleries



4. GRAHAM BLONDEL (NSW)

Friends – Pinkie, Bob, Jake & Bluey
acrylic paint on acrylic casts
30 x 30 x 30 cm
\$2,200



5. ROSALIND BYASS (VIC)

Fossicker
fabric coils, hand stitched buttons, labels
21 x 32 x 32 cm
\$350



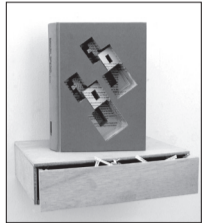
6. KERRY CANNON (NSW)

The Boudoir
bronze, paint, mirror
42 x 27 x 12 cm
\$6,200
Courtesy of Ceramic Break Sculpture Park



7. GARY CHRISTIAN (NSW)

Atomic Family
Stainless steel, corten steel
76 x 76 x 30 cm
\$7,700



8. CHANELLE COLLIER (NSW)

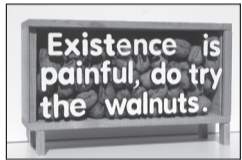
Bibliotheken Bauen (Building for Books)
paper, glass, wood
25 x 23 x 17 cm
\$740
Courtesy of SOLDIERS Rd Gallery



9. PAUL DAVIES (NSW)

Bridges
bronze
42 x 21 x 2 cm
\$4,500

Courtesy of Tim Olsen Gallery



10. JULIAN DI MARTINO (VIC)

Do Try the Walnuts
wood, perspex, painted plastic lettering, walnuts
23 x 39 x 12 cm
\$1,500



11. SHEENA DODD (NT)

Tjajipi Urutja Kutjara (Two Waterbirds)
tjajipi (desert grasses), raffia, wool, wire
49 x 50 x 38 cm
\$660
Courtesy of Tjanpi Desert Weavers



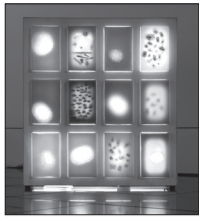
12. LYNDA DRAPER (NSW)

Aftermath
porcelain, multiple glaze firings
20 x 45 x 35 cm
\$2,200
Courtesy of Stella Downer Fine Art



13. MARIA FERNANDA CARDOSO (NSW)

LOVE DARTS: the 'original' Cupid's arrows
nylon, wood, metal
50 x 46 x 60 cm
\$15,000



14. SYLVIA GRIFFIN (NSW)

Urchin Box
timber, aluminium extrusions, LED lights, wax, urchin fragments
54 x 49 x 14 cm
\$1,800



15. NIGEL HARRISON (NSW)

Excogitate
stainless steel
40 x 20 x 27 cm
\$4,000
Courtesy of Arterreal Gallery



16. TEVITA HAVEA (NSW)

Connect, Disconnect, Reconnect
glass, wood, string, male/female adaptors
60 x 50 x 2 cm
\$3,500
Courtesy of Glass Artist Gallery



17. TITANIA HENDERSON (VIC)

Remembering
bone china
37 x 30 x 25 cm
\$4,500
Courtesy of Karen Woodbury Gallery



18. ANNIE HERRON (NSW)

You Can Take It With You
bronze
25 x 25 x 20 cm
\$3,950
Courtesy of Maunsell Wickes



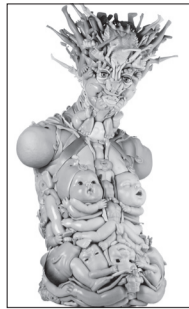
19. BELINDA HOLLOWAY (TAS)

LOL Not
plastic doll bust, computer keys, MP4 player, computer wire
40 x 30 x 20 cm
\$590



20. ROBYN HOSKING (VIC)

The Wing Walker
stoneware and porcelain slip, decals, lustres, fine silver, turntable, mixed media
52 x 42 x 42 cm
\$6,000



21. FREYA JOBBINS (NSW)

Juno the other Hera
fibreglass vintage mannequin, plastic dolls
80 x 50 x 45 cm
\$3,800



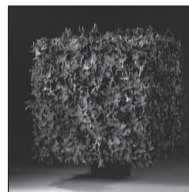
22. FAIRLIE KINGSTON (NSW)

Hi Tide
illuminated ceramic
22 x 18 x 18 cm
\$4,950
Courtesy of Australian Galleries



23. SHERRIE KNIPE (VIC)

After the Deluge
plywood, pine veneer, cotton
70 x 41 x 18 cm
\$10,000
Courtesy of Stella Downer Fine Art



24. BRONEK KOZKA (VIC)

But When I Became a Man
iron, wood, paint, styrofoam, plastic
34 x 34 x 46 cm
\$2,800
Courtesy of Belt Gallery and Mars Gallery



25. ANITA LARKIN (NSW)

Weapon of Mass Deception
felted wool, bronze, stoneware, collected objects
74 x 78 x 31 cm
\$4,500
Courtesy of Defiance Gallery



26. KARLEENA MITCHELL (VIC)

Art Attack
books, pick, paint, metal rod, base
80 x 70 x 70 cm
\$8,500



27. IAN MUNDAY (TAS)

A Walk in the Black Forest
recycled wood, bamboo, acrylic paint, wax, graphite, shellac, Huon Pine, woodstain
44.5 x 30.5 x 18 cm
\$4,500



27. KENDAL MURRAY (NSW)

Time Rhyme, Mime
mixed media assemblage
8.5 x 8 x 9 cm
\$1,600
Courtesy of Arthouse Gallery



29. COLIN OFFORD (QLD)

North South East West
metal parts, detritus
73 x 15 x 20 cm
\$2,400



30. JANET PARKER-SMITH (NSW)

We Are All Just Earthly Creatures, no. 2
wooden box, etched copper, fixed digital print on copper
62 x 40.5 x 25 cm
\$2,200



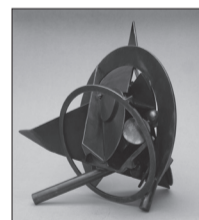
31. RODNEY POPLER (NSW)

Layla
wood, wax, pigment, hessian, tulle, metal, slate
70 x 60 x 31 cm
\$9,500
Courtesy of Australian Galleries



32. RON ROBERTSON-SWANN (NSW)

Duck Carrying a Spring Onion
painted steel
61 x 74 x 16 cm
\$16,000



33. LUKE ROGERS (VIC)

Muzzled
welded steel
50 x 45 x 38 cm
\$2,100



34. LIZ SHREEVE (NSW)

Whorl
torn and curled paper on paper form
49 cm diameter
\$3,000
Courtesy of Stella Downer Fine Art



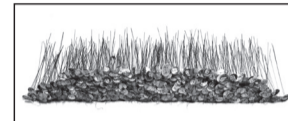
35. SARAH SCHEMBRI (VIC)

Pinnacles
porcelain
17.5 x 3 x 9 cm
\$420 each



36. CHRISTOPHER SPENCE (ACT)

Freshly Brewed 19th Century Gentleman
epoxy putty, ceramic, cardboard, resin, acrylic paint, impasto, wood-chip board
25 x 20 x 7.7 cm
\$300



37. SUSANNA STRATI (NSW)

1,000 Memorialising Gestures
copper, communion wafers, silk, paper
80 x 45 x 20 cm
\$6,400



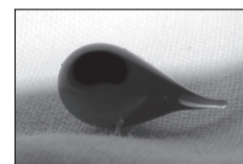
38. DOMINIQUE SUTTON (NSW)

Sea of Words
steel
70 x 18 x 15 cm
\$7,700
Courtesy of Tim Olsen Gallery



39. PETRA SVOBODA (NSW)

Show Pony
ceramic, metallic glaze, wire
50 x 40 x 30 cm
\$1,900



40. JESSICA TSE (NSW)

時 (Time)
glass
9 mm x 5 mm
\$300



41. NAOMI ULLMAN (NSW)

Dreams are made of this
snowdomes, recycled credit cards, water, enamel paint, plastic, glitter
3 x (9 x 7 cm)
\$1,850
Courtesy of The Hughes Gallery



42. KAYO YOKOYAMA (NSW)

Homeland – Valley View
glass, found object
54 x 23 x 13 cm
\$2,475
Courtesy of Keith Rowe Gallery

All Sale Prices include GST

<http://sculptureprize.woollahra.nsw.gov.au>

